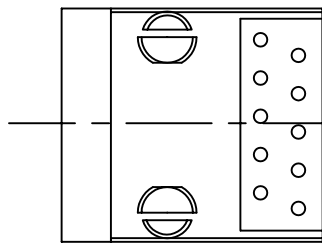


PCB LAYOUT/TOP VIEW



**SPECIFICATIONS**

**MATERIAL:**

1. Housing : PBT Polyester UL94V0
2. Color : Black
3. Contacts : 0.45mm Diameter Phos-Bronze Plated With Hard Gold or 0.35mm Thickness Alloy Selective Gold Plating
4. Shield : 0.20mm Thickness Copper Alloy With Nickel Plated

**ELECTRICAL:**

1. Current Rating : 1.5 AMP MAX
2. Voltage Rating : 150 VAC MAX
3. Contact Resistance : 30 milliohms MAX, initial
4. Insulation Resistance : 500 Megohms MIN
5. Dielectric Withstanding Voltage : 1000 VAC, 1min

UL. CUL NO.: E166003

**Ordering Information**

340S-XXXX-1XX11

No. of Positions  
6,8,1(10P)

No. of Contacts  
2,4,6,8,1(10C)

**Gold Plating**

- 1 - 3u"
- 2 - 6u"
- 3 - 15u"
- 4 - 30u"
- 5 - 50u"

**Contacts**

- 1 - Round Pin
- 2 - Flat Pin


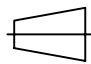
**Grounding Pegs**

- 3 - Rear 3.05
- 4 - Front 3.05

**Panel Grounding**

- 1 - W/O P.G. Tab
- 2 - Top P.G. Tab
- 3 - Top & Side P.G. Tab

No. of Positions	Dimensions m/m	
	A	
6	10.00	
8/10	12.00	

.X ±0.3	UNITS mm	DWG NO.:
		APPD: C. T. Tsai
.XX ±0.20	SCALE Free	CHKD:
		DR: S. K. Liu
TOLERANCE		SHEET: 1/1
 		REV: A
		DATE: 07/28/03

TITLE:  
Side Entry Shielded Modular Jack

PART NO.:  
340S-XXXX-1XX11

皇杰興業有限公司  
FINE JACK INDUSTRIAL CO., LTD